

Basingstoke Sludge Treatment Centre

construction and commissioning of a £43m sludge treatment centre at Thames Water's Basingstoke STW by the eight2O Alliance

by Kerry Gutteridge BEng CEng MICE

The Basingstoke Sludge Treatment Centre (STC) incorporates liquid and caked, raw sludge import facilities together with thermal hydrolysis and anaerobic digestion plant which will process 53tDS/day of sludge from Basingstoke, Farnham, Fleet, Guilford and Newbury. This will fulfil Thames Water's strategy to cease unsustainable liming activities at the four satellite sites up to the 2036 design horizon. Combined heat and power (CHP) engines, installed as part of the project will generate sufficient green electricity to satisfy the STC and the existing STW requirements and surplus power will be exported to the Grid.



2 (No.) CHP engines in foreground. Engine start-up achieved to programme using temporary gas supply - Courtesy of Costain

Undertakings

The sludge treatment centre is being constructed and commissioned by the eight2O alliance which is the largest alliance in the water sector. The partners involved are Thames Water and two design and build joint ventures made up of Costain, Atkins, Black & Veatch (CABV) and Skanska, MWH (now part of Stantec) and Balfour Beatty (SMB). MWH also leads programme control and IBM is the technology innovation partner.

At Basingstoke STC, MWH UK began the detailed design in March 2015. Costain started construction in September with targets of achieving ROCs accreditation on the new CHP engines before the scheme closed in March 2017 and will achieve full operational benefits by March 2018.

Design options

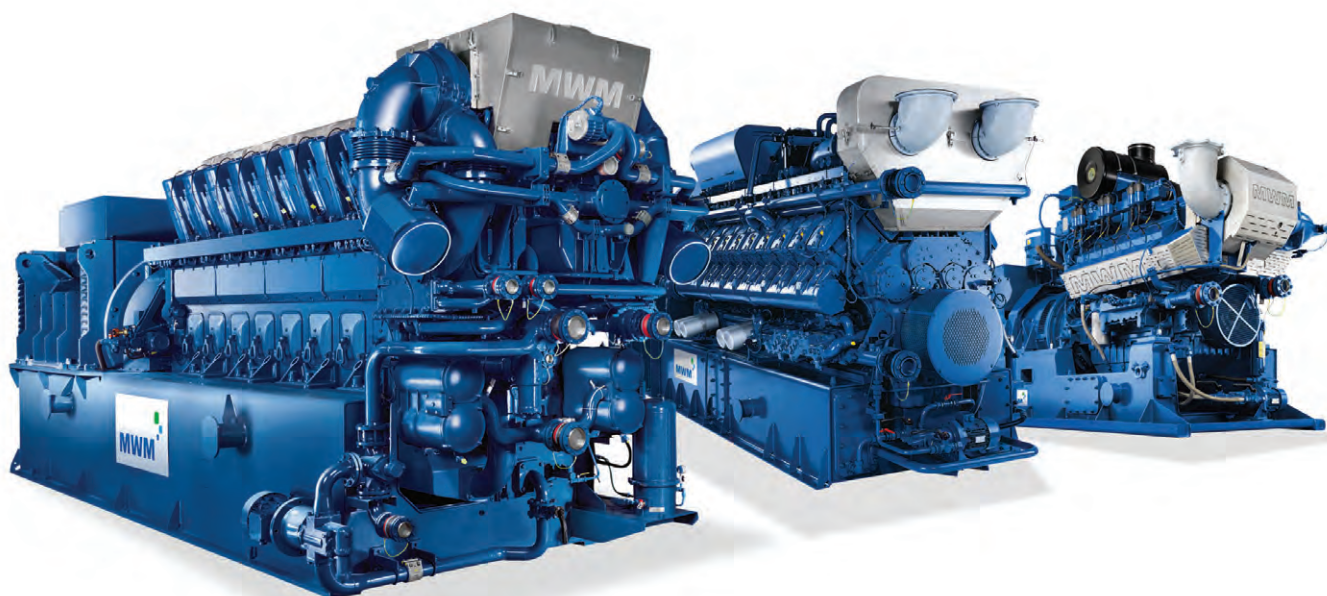
At an early stage in the project both the thermal hydrolysis process (THP) and a new variant, the intermediate thermal hydrolysis process (iTHP), were considered. The latter has been shown to

produce more biogas than THP which in turn results in more power generation. However for sites with a high proportion of imported cake, such as Basingstoke, the cost of diluting the cake prior to primary digestion and then dewatering the primary digestate prior to thermal hydrolysis exceeds the revenue generated from exporting electricity from the site, so iTHP was not economically viable in this installation.

The PR14 business plan solution was based on expanding the existing sludge treatment facility within a very small site area which would have caused operational, demolition and construction phasing difficulties. In view of this MWH recommended that the STC be built off-line on some of the old stormwater treatment plots immediately to the east of the existing STW.

This provided numerous benefits in terms of minimising interfaces with the existing operational works during construction and the optimisation of plant and services' layout was not compromised by lack of space.

Delivering energy efficient CHP solutions.



Edina is a leading supplier, installer and maintenance provider for natural gas and biogas CHP (combined heat and power) plants, and is the sole distributor for MWM manufactured engines in the UK and Ireland.

Offering full turnkey contracts and customised container options manufactured in-house, we work closely with our customers to meet their requirements from initial contact to long term maintenance support.

For more information about our power generation solutions, please contact us at:

T: +44 (0)161 432 8833
E: info@edina.eu
W: www.edina.eu



BASINGSTOKE STW:

CTM are proud to have designed, manufactured and installed the live bottom cake reception unit and 500m³ storage silo comprising a live bottom discharge screw system at Basingstoke STW. The scheme is due to be commissioned in 2017.



CTM Systems Limited

Atherstone House
The Sidings
Merrylees Industrial Estate
Merrylees, Leicester LE9 9FE
Phone: 01530 239181
Fax: 08450 775513
Email: sales@ctm-systems.co.uk
Web: www.ctm-systems.co.uk

SUPPLIERS OF:

- ♦ Sludge cake reception bunkers
- ♦ Sludge cake storage silos
- ♦ Shafted and shaftless screw conveyors
- ♦ Fixed and radial conveyors
- ♦ Live bottom bins
- ♦ Dried sludge cooling screws
- ♦ Screenings handling conveyors
- ♦ Troughed belt conveyors
- ♦ Continuous mixers/blenders

**DESIGN, MANUFACTURE, INSTALLATION AND COMMISSIONING
OF MATERIALS HANDLING EQUIPMENT**

SEEPEx.
ALL THINGS FLOW

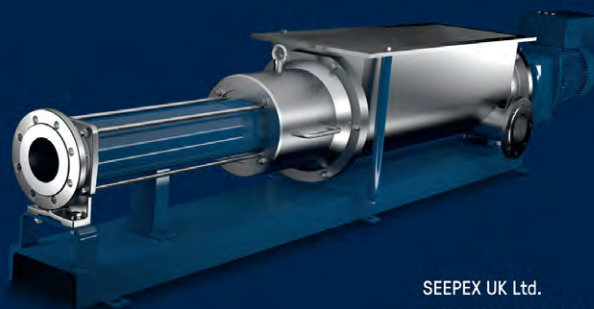
FOR HIGH VISCOSITY PRODUCTS

SEEPEx progressive cavity pumps with open hoppers and auger feed screws transfer highly viscous and non flowable products.

Customised solutions with adaptable feed configurations mean that even the most challenging products can be handled. Hygienically designed options for food products are also available.

- Conveying capacities up to 500 m³/h
- Handle up to 50% high dry solids
- Liquid addition and mixing within the auger and compression zone for optimum solids content
- Optimised feed hopper for efficient pump feed – no bridging
- Modular system enables rapid customisation for your application
- Optional knife system for cutting within the pump
- Designed for easy maintenance

Whatever you want to pump, your product handling problems can be solved by SEEPEx's open hopper pumps.



SEEPEx UK Ltd.
sales.uk@seepex.com
www.seepex.com

Existing plant

The existing sludge treatment plant at Basingstoke STW treats 12.9tDS/d and consists of gravity belt and picket fence thickeners, primary and secondary digesters, digested sludge dewatering belts and a covered cake storage area.

Electricity from 2 (No.) existing CHP engines is used on site. The existing digesters and CHPs will be decommissioned once the new STC is commissioned.

New plant

The STC is designed for a throughput of 53tDS/d; under normal operation however it can accommodate up to 70tDS/s in order to catch up with a backlog of sludge imports when the THP and steam boiler are shut down for annual servicing and during infrequent unplanned shut downs.

At the normal throughput of 53tDS/d, the CHPs will generate 2.23MW and satisfy the 1.32MW total demand of the STC and the existing STW and the remainder will be exported to the Grid.

The STC comprises the following:

- Imported sludge cake facility.
- Imported liquid sludge facility.
- Indigenous sludge collection and transfer to STC.
- Liquid sludge blending, buffering and screening.
- Pre-THP dewatering, polyelectrolyte storage, preparation and dosing for pre-THP dewatering.
- Sludge cake back-mixing and dilution.
- THP feed silo.
- Thermal hydrolysis plant.
- Sludge cooling and transfer to digesters.
- Digesters.
- Digested sludge collection and transfer.
- Digested sludge dewatering and storage (existing).
- Biogas storage and utilisation.
- Gas engines.
- Dual fuel boiler (biogas and diesel oil).
- Odour control plant.
- Liquor collection and return; partial flow to the existing aeration plant, the remainder to a liquor treatment facility.
- Final effluent supply.
- Potable water supply (reverse osmosis plant).
- Standby generator for essential services.
- Auxiliary fuel storage.

Building on previous experiences

Whilst THP technology has been used in the wastewater industry for some time now and the actual THP optimised, it is the design and operation of ancillary systems that determine the success of the plant. Indeed there are currently projects being undertaken across numerous water companies to 'optimise' the operation of existing installed THP plants.

The project team worked closely to build on previous experiences and good knowledge of existing THP plants to make Basingstoke THP the best it can be, some points of particular note:

- **Digested sludge collection tower:** A digested sludge collection tower has been constructed to counter issues and problems associated with digester surging (volume changes). THP sludge is very digestible, producing a lot of gas compared to non-THP digestion. As soon as THP sludge is fed into the digester, within minutes biogas is produced. Thus, the digester feed rate has a significant effect on the operation of the digesters; an increase in feed rate results in an increase in gas entrainment, resulting in a density fall and rapid volume increase. This effect causing a 'surge' and sudden discharge from the digester.



Stormwater treatment plot before construction - Courtesy of Costain



Excavation for cake import bunker - Courtesy of Costain



CAMBI THP being lifted into position - Courtesy of Costain



Kirk GFS tanks installed. Digested sludge collection tower on right in front of digester - Courtesy of Costain

Addicott Electrics Ltd are proud to have been building a quality product for 30 years



Bespoke manufactures of generator sets to meet Water Industry Standards

AEL are bespoke manufacturers of diesel powered generator sets from 10kva up to 3500kva

**Generator Manufacture - Sales - Service - Hire - Repair - Generator Control and Synchronising
Panel Manufacture - Complete M&E Installations**



Quay Road, Teignmouth, Devon TQ14 8EL | www.addicotelectrics.co.uk | 01626 774087



**KIRK
GROUP**

+44 (0) 1282 677 966
SALES@KIRK.GROUP
WWW.KIRK.GROUP
GLOBAL SPECIALIST IN LIQUID & BIOGAS
STORAGE SOLUTIONS



DESIGN, MANUFACTURE AND INSTALLATION OF SIMPLE WATER
STORAGE TANKS TO COMPLEX SCHEMES

**WATER
WASTEWATER
ANAEROBIC DIGESTION
BIOGAS INFRASTRUCTURE**

CHALLENGE PLACE, 1 CHALLENGE WAY,
GREENBANK TECHNOLOGY PARK,
BLACKBURN, LANCASHIRE, BB1 5QB

As the digesters work on hydrostatic displacement there may be a surge out of 3 main tanks, the digested sludge collection tower acts as a balance tank which reduces the risk of rapid volume loss and allows sludge levels to be managed by the forwarding pumps.

- **Foaming in digesters:** This has been an issue on many of the earlier sites; which is due to what the 'digestive' bacteria excrete (a washing up liquid like substance) that creates a stable layer on top of the sludge. In theory, if there is a continuous feed, with a continuous discharge then all should be well.

However, small variations in gas production happen as soon as sludge stops overflowing/discharging from a digester; this results in degassing in the digester and a thicker (higher density) of sludge in the discharge pipe which cannot readily be pushed through. Pressure keeps building up until the 'slug' of higher density sludge can be pushed through.

On the outlet pipes of the digesters at Basingstoke, an air lift system has been installed to encourage the density in the riser pipe to remain relatively low by introducing air into the system.

- **Ammonia consent:** Basingstoke STW has a 1 mg/l ammonia consent. As part of the project, Basingstoke will import three times its indigenous sludge production thus generating more ammonia load which will put strain on the STW to maintain consent. To overcome this issue a Demon LTP is being installed for ammonia removal; a low energy and low sludge production solution.
- **Natural fuel availability:** There is no natural support fuel to rely on as providing a new gas supply to site was considered too expensive so the THP will in effect run-itself, using biogas to run the plant. A small diesel storage has been provided to enable 'start-up' during the commissioning phase and following maintenance periods.
- **Use of low grade heat from CHP engines:** To heat final effluent for dilution of sludge pre-THP and also heating the hot well. Both reduce steam consumption which means more biogas available for generating electricity.
- **Back-mixing facility:** THP needs to be fed at a relatively consistent feed dry solids to achieve optimal performance. Incoming cake is too thick to feed directly. The use of screened liquid sludge to dilute pre-dewatered sludge down to 20% dry solids before going to the THP feed silo has been provided. This saves on polymer usage in the pre-dewatering process.
- **Use of low grade heat:** to keep LTP bacteria warm.

Construction

To realise the potential fast delivery benefit of a design and construct approach, civil designs were called for in advance of receiving 'official' supplier design information, thus the handling of interfaces with key plant suppliers was crucial to the success of the project. At the time of writing (August 2017) circa 8000m of underground pipework, 6000m of above-ground pipework and 5000m of cabling has been installed.

In the absence of supplier information, experience based design decisions were important in facilitating the installation of such services, in particular designating two main above ground service corridors and locating plant/setting the site falls to facilitate the gravity pipe runs.



Over 3500m of underground pipework has been installed
Courtesy of Costain



End of one of the pipe corridors filling up quickly - Courtesy of Costain



Road construction underway. Dewatering belts and polymer dosing kiosk in the foreground - Courtesy of Costain



Basingstoke STC - Drone aerial view - Courtesy of eight2O Drone Service

Plant Item	Supplier	Plant Item	Supplier
Pressurised Sludge Screens	Huber Technology	Pumps	Seepex and Xylem
Polymer Dosing	Richard Alan Engineering	Pipework	FSD Ltd
Dewatering Belts	Solids Technology	Liquor Treatment Plant	SWECO
Imported Cake reception facility	CTM Systems Ltd	Odour Control	Plasticon UK Ltd
GFS Tanks	Kirk Environmental Ltd	Tank Mixing	System Mix and Utile
THP	Cambi AS	Waste Gas Burner	Flare Products Ltd
Engines	Edina Group	Transformers	SSE
Boiler	Dunphy Combustion Ltd	Heat Exchanger	HRS Heat Exchangers Ltd

Underground structures were minimised to reduce potential for delays due to potential groundwater and increased construction costs associated with excavations. There were only two pumping station shafts (each approximately 7m deep) and one large cake import bunker (20 x 15 x 5m deep) that required substantial excavation.

Importantly, much of the mechanical plant (e.g. FE transfer pumping station), was skid mounted to reduce installation time on site and some of the larger plant items, including the THP plant, were assembled off-site prior to being dismantled and reassembled on site to minimise installation issues.

Supply chain

Over 40 suppliers were engaged, mainly under NEC Option C Target Cost, from local contractors to as far afield as the Netherlands. The largest value contracts were FSD (pipeline supply and design) £4m and CAMBI (THP plant) circa £3m. The smallest value contract was with NBK (Nick Building Contractors) circa £20,000.

The longest lead in time from inception to delivery was approximately 10 months, and nearly 160 CEs have been raised and

closed to date. Spending peaked between November 2016 and March 2017 at circa £1.3m per month.

Progress

The programme was driven by the need to achieve ROCs accreditation of the engines by March 2017. Ideally this meant that all plant would be up and running; the site would be receiving and processing sludge imports, the THP would be in operation and digesters producing the gas required to run the engines.

To 'de-risk' the programme MWH suggested and designed a temporary gas main which was installed across the site from the existing gas holder to allow engine start up in advance of March 2017. Currently the CHP engines are running, the digesters have been seeded and one is being brought up to temperature.

First imports are expected in June, ramping up to a fully commissioned works by March 2018.

The editor and publishers would like to thank Kerry Gutteridge, Principal Civil Engineer with MWH (now part of Stantec), for providing the above article for publication.



Basingstoke STC - Construction Progress June 2017 - Courtesy of eight:O Drone Service

Design, manufacture and install:

► Filter Belt Presses ► Polymer Preparation Systems ► Gravity Belt Thickeners

- Manufactured from duplex stainless steel for strength and corrosion resistance.
- Fully enclosed filter belt press / gravity belt thickener designs to reduce odour.
- Externally mounted controls/ mechanical parts outside wetted zone to avoid corrosion and to aid maintenance .
- Turnkey sludge thickening & dewatering solutions to Municipal & Industrial markets



Filter Belt Presses



Gravity Belt Thickeners



A member of



BRITISH WATER



UVDB
empowered by Achilles



Kent Stainless Ltd/ Solids Technology
Ardcavan, Wexford, Ireland